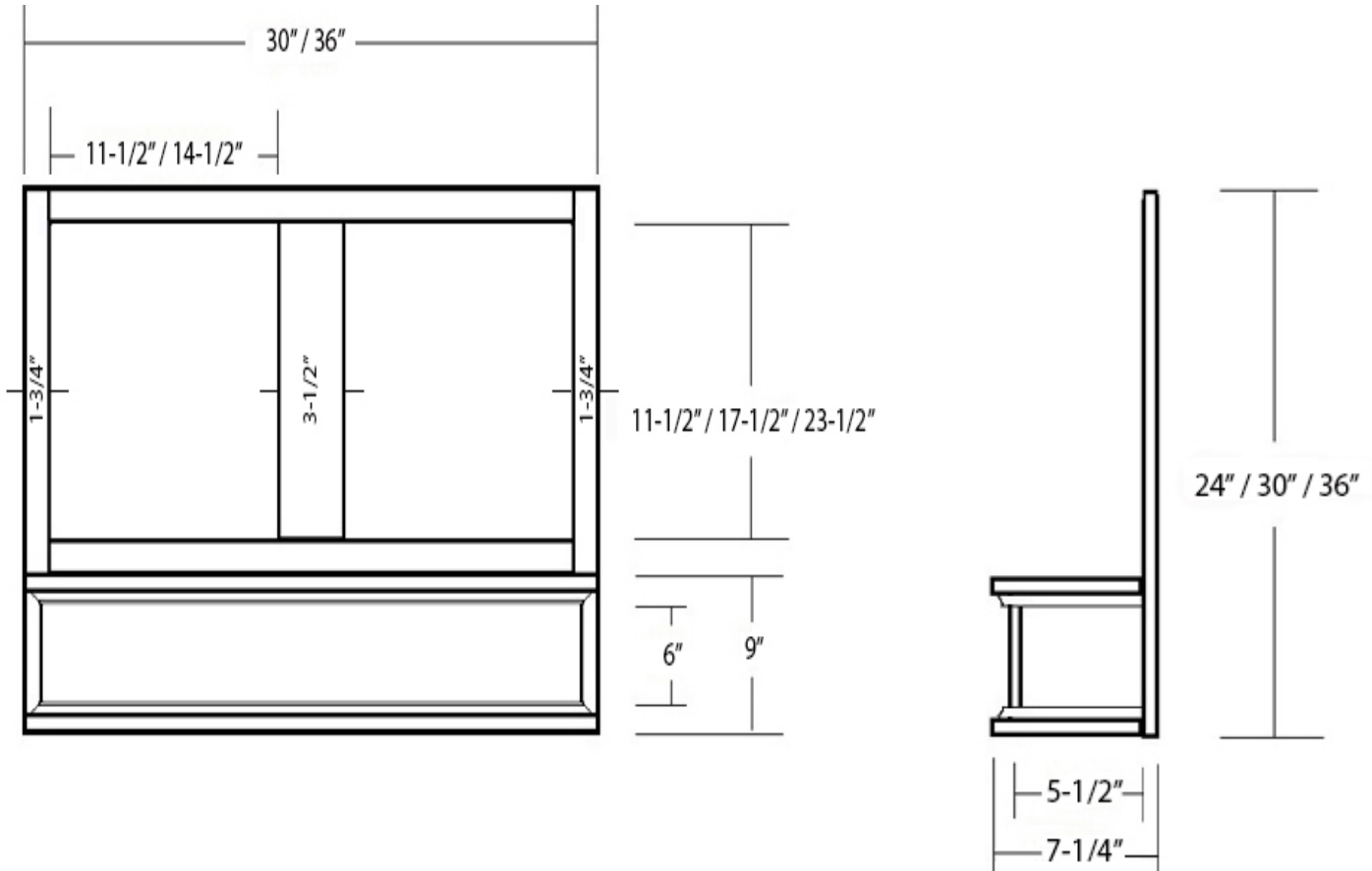




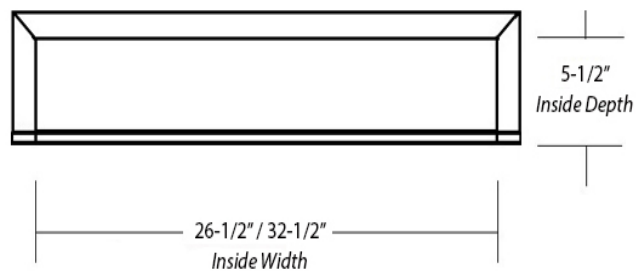
## Mantel Style Range Hood Front

Front View

Side View



Item #	Dimensions (h) x (w) x (d)	Liner
SY-JSVHF3024	24" x 30" x 7-1/4"	SY-HLT-30
SY-JSVHF3030	30" x 30" x 7-1/4"	SY-HLT-30
SY-JSVHF3036	36" x 30" x 7-1/4"	SY-HLT-30
SY-JSVHF3624	24" x 36" x 7-1/4"	SY-HLT-36
SY-JSVHF3630	30" x 36" x 7-1/4"	SY-HLT-36
SY-JSVHF3636	36" x 36" x 7-1/4"	SY-HLT-36



- Hardwood Plywood and Solid Lumber Construction
- Accepts SY-HLT series T-shape Powder Coated Steel Liners (*sold separately*)
- Select from 300, 400 and 600 CFM Broan Ventilation power packs (*sold separately*) or
- Ascension 350SL, 350SS, 500SS and 620SS CFM Ventilation power packs (*sold separately*)
- Available in Alder, Cherry, Hickory, Maple and Red Oak
- Designed to be used with customer supplied cabinet doors
- Must be mounted between two wall cabinets
- Base section will accommodate ornaments up to 5" x 24"

