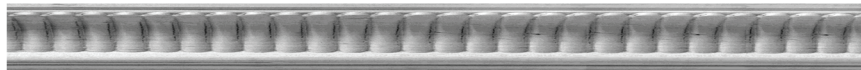
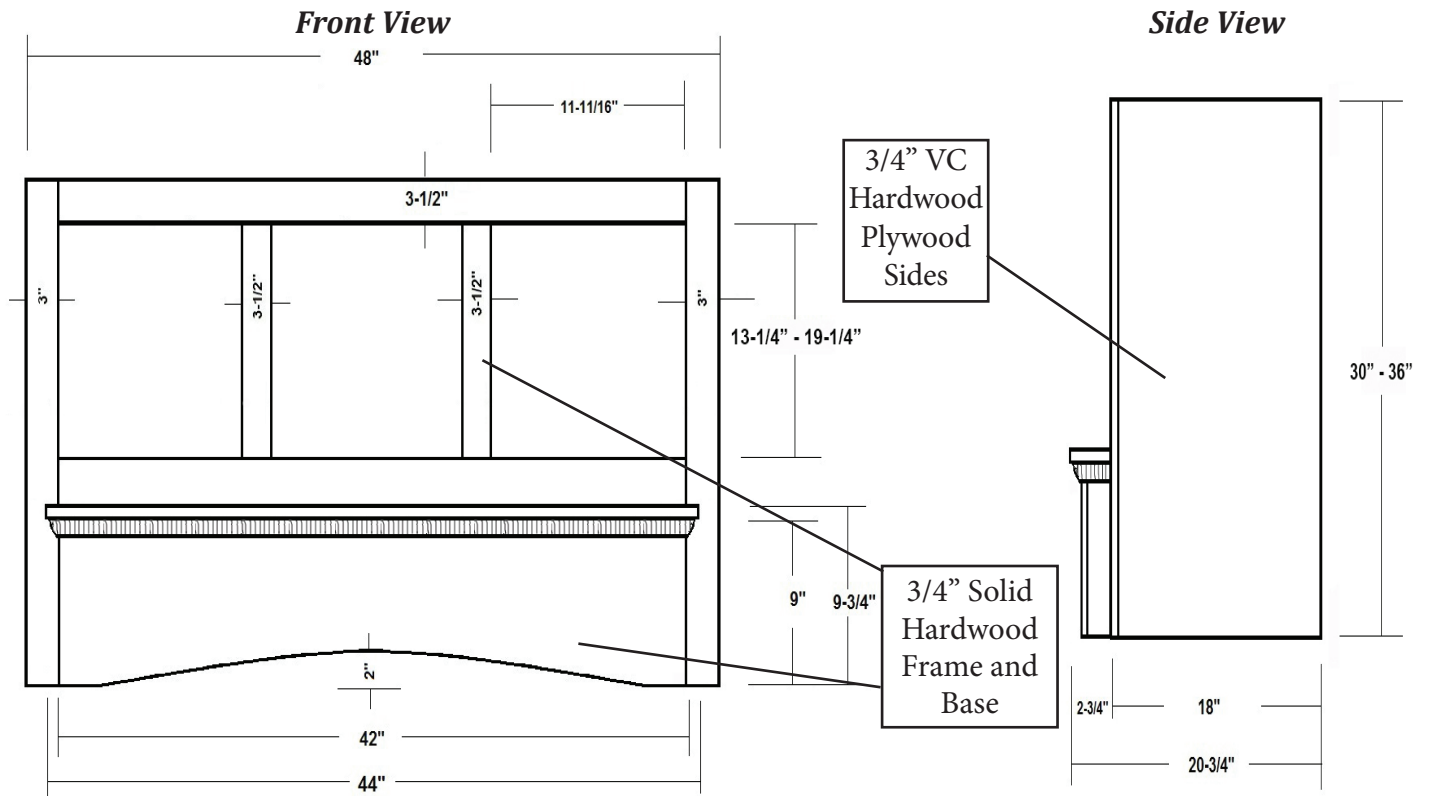


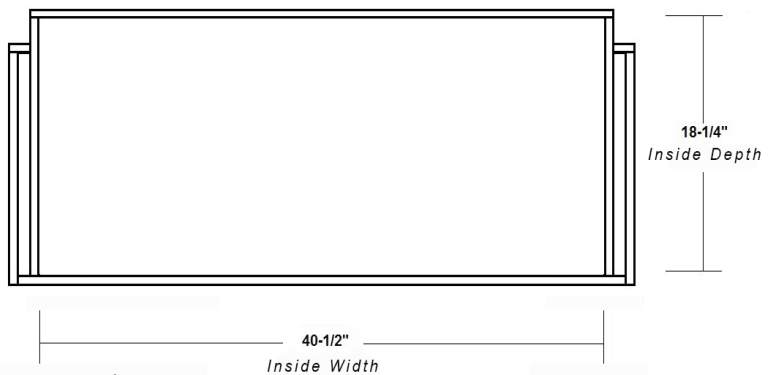


Reeded Mantel Range Hood



Molding Detail

Item #	Dimensions (h) x (w) x (d)	Liner
SY-WMHAR4830	30" x 48" x 20-3/4"	SY-HLB-42
SY-WMHAR4836	36" x 48" x 20-3/4"	SY-HLB-42



- Hardwood Plywood and Solid Lumber Construction
- Internal bracing with cleats, glue and pocket screws
- 1/2" Rear Plywood Stretchers for wall mounting
- Accepts SY-HLB series rectangular Powder Coated Steel Liners (*sold separately*)
- Select from 250, 390 or 500 CFM Broan Ventilation power packs (*sold separately*)
- Available in Cherry, Hickory, Maple and Red Oak
- Optional Door Packs are available
- Increased Depth option available

